



2440 Charles St. N Suite 210
 North St. Paul, MN 55109
 651-777-0111 Doug Andrus
 doug@crow Realty1.com

Addendum A

Delaware Place Townhome Price Sheet

Lot: 10

Base Price Lots 1-10 \$439,900.00 439,900

Upgrades:

Gas Fireplace with Wood Mantle and Cultured Stone to Mantle Height	\$6,975.00	<u>6,975</u>
Tile Shower in Master Bathroom (\$1,500 tile allowance)	\$5,725.00	<u>5,725</u>
Tile Backsplash (\$300 tile allowance, All tile laid in standard pattern)	\$1,250.00	<u>1,250</u>
In Floor heat (forced air included in base price)	\$8,800.00	<u>8,800</u>
Bench	\$1,450.00	<u>1,450</u>
Insulate Garage Walls and Ceiling	\$800.00	<u>800</u>

Allowances:

Lighting	\$800.00
Appliances (Washer and Dryer not included)	\$3,850.00

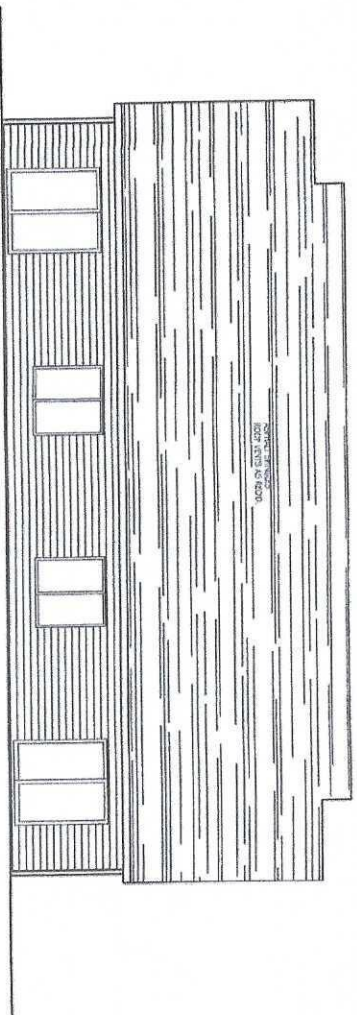
Total \$ 464,900

 Buyer Date

 Andrus Built LLC Date

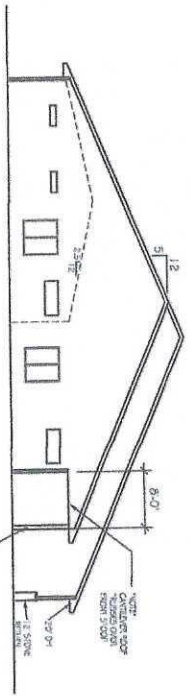
 Buyer Date

Association fees are \$280/month (\$130 for Homeowners Insurance + \$150 for maintenance, lawn care and snow removal) An additional 2 months of association fees are due at closing to build up the reserve



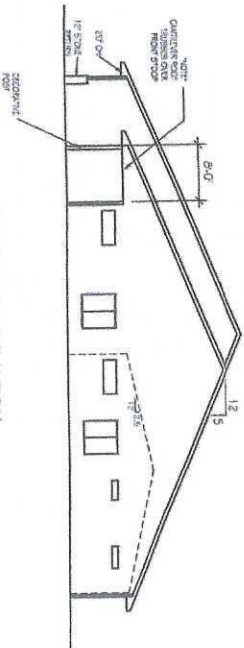
REAR ELEVATION

SCALE: 1/2" = 1'-0"



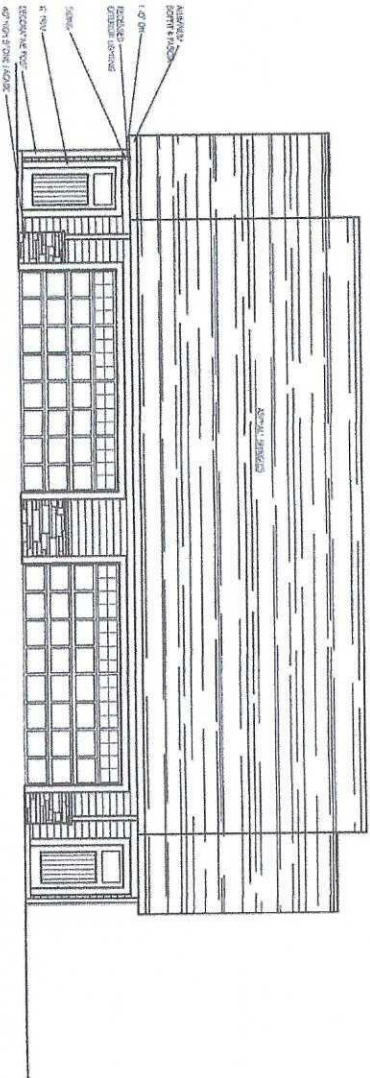
LEFT SIDE ELEVATION

SCALE: 1/2" = 1'-0"



RIGHT SIDE ELEVATION

SCALE: 1/2" = 1'-0"



FRONT ELEVATION

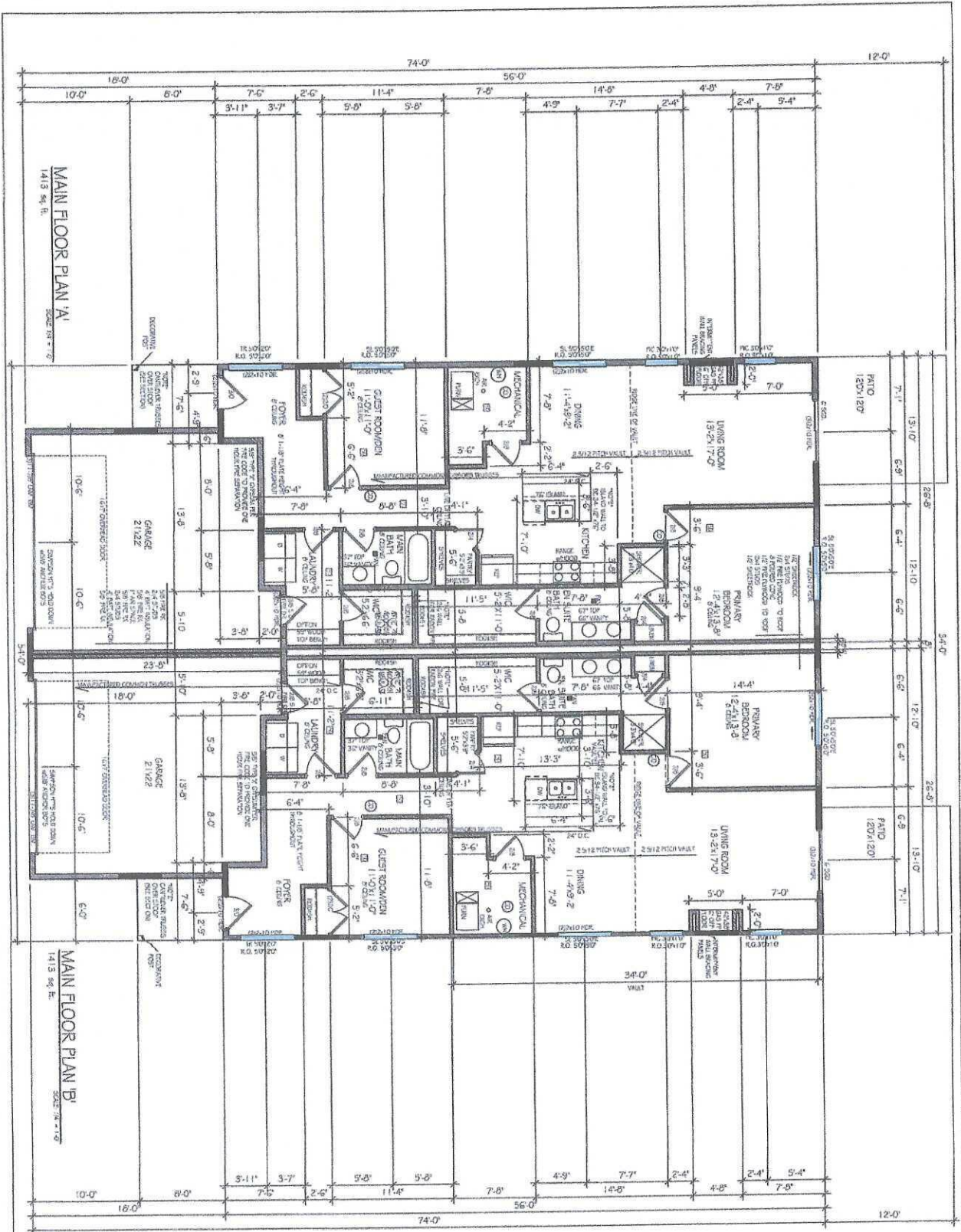
SCALE: 1/2" = 1'-0"

DATE: 08/21/18	BY: J. J. JONES
SCALE: 1/2" = 1'-0"	PROJECT: DELAWARE PLACE
PLAN #240118	
PG. 10/F.1	

CONSTRUCTION NOTES:
 1. REFER TO ALL OTHER SHEETS FOR FINISHES AND MATERIALS.
 2. ALL WORK SHALL BE DONE IN ACCORDANCE WITH THE LATEST EDITIONS OF THE INTERNATIONAL RESIDENTIAL CODE BOOK (IRC) AND THE LATEST EDITIONS OF THE INTERNATIONAL BUILDING CODE (IBC).
 3. ALL WORK SHALL BE DONE IN ACCORDANCE WITH THE LATEST EDITIONS OF THE DELAWARE STATE BUILDING CODE (DSBC).
 4. ALL WORK SHALL BE DONE IN ACCORDANCE WITH THE LATEST EDITIONS OF THE DELAWARE STATE ELECTRICAL CODE (DSEC).
 5. ALL WORK SHALL BE DONE IN ACCORDANCE WITH THE LATEST EDITIONS OF THE DELAWARE STATE MECHANICAL CODE (DSMC).
 6. ALL WORK SHALL BE DONE IN ACCORDANCE WITH THE LATEST EDITIONS OF THE DELAWARE STATE PLUMBING CODE (DSPC).
 7. ALL WORK SHALL BE DONE IN ACCORDANCE WITH THE LATEST EDITIONS OF THE DELAWARE STATE FIRE AND SAFETY CODE (DSFSC).
 8. ALL WORK SHALL BE DONE IN ACCORDANCE WITH THE LATEST EDITIONS OF THE DELAWARE STATE ENVIRONMENTAL CODE (DSENC).
 9. ALL WORK SHALL BE DONE IN ACCORDANCE WITH THE LATEST EDITIONS OF THE DELAWARE STATE HEALTH AND SAFETY CODE (DSHSC).
 10. ALL WORK SHALL BE DONE IN ACCORDANCE WITH THE LATEST EDITIONS OF THE DELAWARE STATE LABOR CODE (DSLAC).
 11. ALL WORK SHALL BE DONE IN ACCORDANCE WITH THE LATEST EDITIONS OF THE DELAWARE STATE TAX CODE (DSTAC).
 12. ALL WORK SHALL BE DONE IN ACCORDANCE WITH THE LATEST EDITIONS OF THE DELAWARE STATE CRIMINAL CODE (DSCC).
 13. ALL WORK SHALL BE DONE IN ACCORDANCE WITH THE LATEST EDITIONS OF THE DELAWARE STATE CIVIL CODE (DSCV).
 14. ALL WORK SHALL BE DONE IN ACCORDANCE WITH THE LATEST EDITIONS OF THE DELAWARE STATE PROBATE CODE (DSPC).
 15. ALL WORK SHALL BE DONE IN ACCORDANCE WITH THE LATEST EDITIONS OF THE DELAWARE STATE EVIDENCE CODE (DSEC).
 16. ALL WORK SHALL BE DONE IN ACCORDANCE WITH THE LATEST EDITIONS OF THE DELAWARE STATE JUDICIAL CODE (DSJC).
 17. ALL WORK SHALL BE DONE IN ACCORDANCE WITH THE LATEST EDITIONS OF THE DELAWARE STATE CONSTITUTION (DSCON).
 18. ALL WORK SHALL BE DONE IN ACCORDANCE WITH THE LATEST EDITIONS OF THE DELAWARE STATE STATUTES (DSS).
 19. ALL WORK SHALL BE DONE IN ACCORDANCE WITH THE LATEST EDITIONS OF THE DELAWARE STATE REGULATIONS (DSREG).
 20. ALL WORK SHALL BE DONE IN ACCORDANCE WITH THE LATEST EDITIONS OF THE DELAWARE STATE CASES (DSCAS).
 21. ALL WORK SHALL BE DONE IN ACCORDANCE WITH THE LATEST EDITIONS OF THE DELAWARE STATE OPINIONS (DSOP).
 22. ALL WORK SHALL BE DONE IN ACCORDANCE WITH THE LATEST EDITIONS OF THE DELAWARE STATE DECISIONS (DSD).
 23. ALL WORK SHALL BE DONE IN ACCORDANCE WITH THE LATEST EDITIONS OF THE DELAWARE STATE COMMENTS (DSCOM).
 24. ALL WORK SHALL BE DONE IN ACCORDANCE WITH THE LATEST EDITIONS OF THE DELAWARE STATE NOTES (DSNOT).
 25. ALL WORK SHALL BE DONE IN ACCORDANCE WITH THE LATEST EDITIONS OF THE DELAWARE STATE REVISIONS (DSREV).
 26. ALL WORK SHALL BE DONE IN ACCORDANCE WITH THE LATEST EDITIONS OF THE DELAWARE STATE AMENDMENTS (DSAM).
 27. ALL WORK SHALL BE DONE IN ACCORDANCE WITH THE LATEST EDITIONS OF THE DELAWARE STATE SUPPLEMENTS (DSSUP).
 28. ALL WORK SHALL BE DONE IN ACCORDANCE WITH THE LATEST EDITIONS OF THE DELAWARE STATE CORRECTIONS (DSCOR).
 29. ALL WORK SHALL BE DONE IN ACCORDANCE WITH THE LATEST EDITIONS OF THE DELAWARE STATE REPEALS (DSREP).
 30. ALL WORK SHALL BE DONE IN ACCORDANCE WITH THE LATEST EDITIONS OF THE DELAWARE STATE REVOCATIONS (DSREVOC).
 31. ALL WORK SHALL BE DONE IN ACCORDANCE WITH THE LATEST EDITIONS OF THE DELAWARE STATE REPEALS AND REVOCATIONS (DSRR).
 32. ALL WORK SHALL BE DONE IN ACCORDANCE WITH THE LATEST EDITIONS OF THE DELAWARE STATE REPEALS AND REVOCATIONS (DSRR).

ANDRUS BUILT
 Custom Built Homes and Remodeling

1100 W. 10th Street
 Dover, DE 19904
 Phone: 302.739.1111
 Website: www.andrusbuilt.com



DELAWARE PLACE
PLAN #210118
PG 30F4

ANDRUS BUILT
Custom Built Homes and Remodeling
1195 S. 10th Street, Suite 100
Trenton, NJ 08611
732-979-1234
www.andrusbuilt.com

